

Lemi SCHREIBHEFTE



LS1

Gg

LS2

Gg

LS3

Gg

LS4

Gg

LS5

Gg

LS6

Gg

Lemi WÖRTERHEFTE

LW1

Gg

LW2

Gg

LW3

Gg

LW4

Gg

LW5

Gg

LW6

Gg



Lemi GESCHICHTENHEFTE



LG1

Gg

LG2

Gg

LG3

Gg

LG4

Gg

LG5

Gg

LG6

Gg

Lemi RECHENHEFTE

LR1

1

LR2

1

LR3

1

LR4

1

LR5

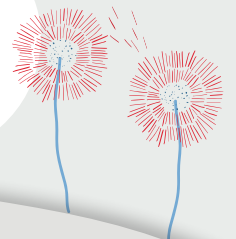
1

LR6

1



Intelligente Schulhefte mit System – zu jeder Lineatur eigene Spezialhefte zum Kombinieren. Zu jeder Lineatur gibt es Schreibhefte, Wörterhefte, Geschichtenhefte und Rechenhefte. Unsere Lemi-Lineaturen sind aufeinander aufbauend und unterstützen die Kinder optimal beim Erlernen des Schreibprozesses.



1

2

3

4

5

6

7

8

9

10



A large, light blue speech bubble with a tail pointing towards the lemur. Inside the bubble are two horizontal lines, each starting with a small dot on the left side, intended for writing.

1

A cloud-shaped writing box with a horizontal line and a dot on the left side.

2

A cloud-shaped writing box with a horizontal line and a dot on the left side.

3

A cloud-shaped writing box with a horizontal line and a dot on the left side.

4

A cloud-shaped writing box with a horizontal line and a dot on the left side.

5

A cloud-shaped writing box with a horizontal line and a dot on the left side.

6

A cloud-shaped writing box with a horizontal line and a dot on the left side.

7

A cloud-shaped writing box with a horizontal line and a dot on the left side.

8

A cloud-shaped writing box with a horizontal line and a dot on the left side.

9

A cloud-shaped writing box with a horizontal line and a dot on the left side.

10

A cloud-shaped writing box with a horizontal line and a dot on the left side.

1

2

3

4

5

6

7

8

9

10



A large, light blue speech bubble with a tail pointing towards the lemur. Inside the bubble are two horizontal lines, each starting with a small dot on the left side, intended for writing.

1

A cloud-shaped writing box with a horizontal line and a dot on the left side.

2

A cloud-shaped writing box with a horizontal line and a dot on the left side.

3

A cloud-shaped writing box with a horizontal line and a dot on the left side.

4

A cloud-shaped writing box with a horizontal line and a dot on the left side.

5

A cloud-shaped writing box with a horizontal line and a dot on the left side.

6

A cloud-shaped writing box with a horizontal line and a dot on the left side.

7

A cloud-shaped writing box with a horizontal line and a dot on the left side.

8

A cloud-shaped writing box with a horizontal line and a dot on the left side.

9

A cloud-shaped writing box with a horizontal line and a dot on the left side.

10

A cloud-shaped writing box with a horizontal line and a dot on the left side.



Lemi-Schulhefte und Lemi-Lernhefte
kaufen und dabei Kindern helfen!
Wie das funktioniert, erfahren Sie auf
www.lemi4kids.at.

Alle Lern- und Pädagogik-Schulhefte aus der Serie „Lemi der Lemur“ sind vielfach miteinander kombinierbar und unterstützen in den ersten Schuljahren für einen optimalen Übungserfolg.

Sie finden viele Lernhefte, passend zu jedem Unterrichtsgegenstand, und Schreibhefte von „Lemi der Lemur“ auf www.lemberger.at.