

Lernkontrolle 3A



Rechnen mit Zehnerzahlen und von Zehnerzahlen aus

*

$30 + 50 = \underline{\quad}$

$70 - 30 = \underline{\quad}$

$50 + 20 = \underline{\quad}$

$90 + 10 = \underline{\quad}$

$80 - 50 = \underline{\quad}$

$40 + 40 = \underline{\quad}$

$100 - 30 = \underline{\quad}$

$20 + 7 = \underline{\quad}$

$50 + 5 = \underline{\quad}$

$70 - 3 = \underline{\quad}$

$80 - 1 = \underline{\quad}$

$70 - 4 = \underline{\quad}$

$30 - 5 = \underline{\quad}$

$50 + 9 = \underline{\quad}$

$100 - 6 = \underline{\quad}$

$90 - \underline{\quad} = 70$

$20 + \underline{\quad} = 60$

$90 - \underline{\quad} = 30$

$70 - \underline{\quad} = 10$

$60 - \underline{\quad} = 30$

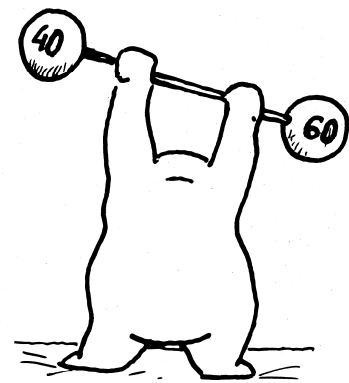
$40 + \underline{\quad} = 44$

$40 - \underline{\quad} = 33$

$50 - \underline{\quad} = 41$

$50 + \underline{\quad} = 58$

$100 - \underline{\quad} = 96$



**

$45 = 40 + \underline{\quad}$

$93 = 90 + \underline{\quad}$

$71 = 80 - \underline{\quad}$

$52 = 60 - \underline{\quad}$

$64 = 60 + \underline{\quad}$

$75 = 80 - \underline{\quad}$

$34 = 30 + \underline{\quad}$

$29 = 20 + \underline{\quad}$

$\underline{\quad} = 50 + 4$

$\underline{\quad} = 30 + 3$

$\underline{\quad} = 0 + 60$

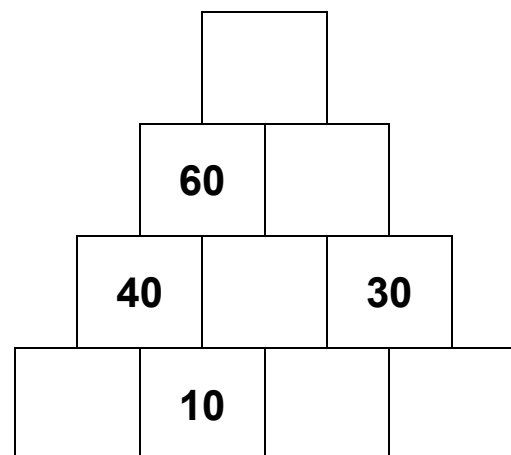
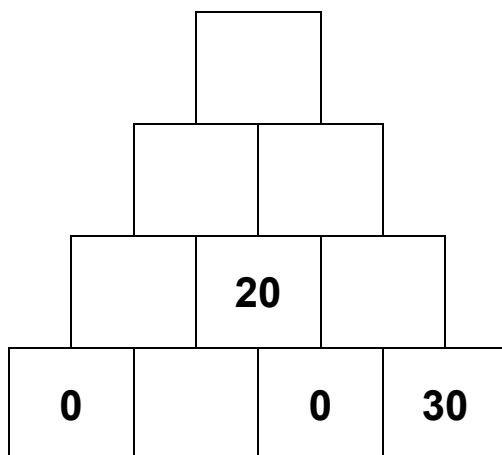
$\underline{\quad} = 40 - 9$

$\underline{\quad} = 80 + 4$

$\underline{\quad} = 20 - 2$

$\underline{\quad} = 100 + 5$

*** Zwei Bausteine zusammengezählt, ergeben den oberen Baustein.



Lernkontrolle 3B



Rechnen mit Zehnerzahlen und von Zehnerzahlen aus

*

$40 + 30 = \underline{\quad}$

$60 + 40 = \underline{\quad}$

$80 + 7 = \underline{\quad}$

$80 - 40 = \underline{\quad}$

$90 - 30 = \underline{\quad}$

$50 - 4 = \underline{\quad}$

$70 + 20 = \underline{\quad}$

$70 + 7 = \underline{\quad}$

$70 - 5 = \underline{\quad}$

$30 + 10 = \underline{\quad}$

$50 + 4 = \underline{\quad}$

$20 + 9 = \underline{\quad}$

$90 - 50 = \underline{\quad}$

$100 - 3 = \underline{\quad}$

$40 - 6 = \underline{\quad}$

$80 - \underline{\quad} = 60$

$30 + \underline{\quad} = 36$

$10 + \underline{\quad} = 60$

$60 - \underline{\quad} = 59$

$70 - \underline{\quad} = 30$

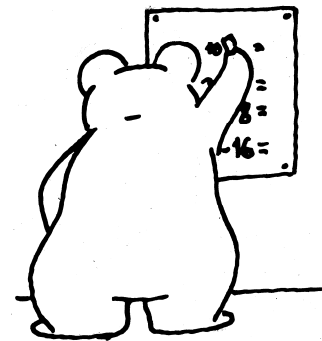
$40 - \underline{\quad} = 32$

$90 - \underline{\quad} = 20$

$50 + \underline{\quad} = 56$

$60 - \underline{\quad} = 30$

$100 - \underline{\quad} = 94$



**

$37 = 30 + \underline{\quad}$

$95 = 100 - \underline{\quad}$

$\underline{\quad} = 0 + 90$

$64 = 60 + \underline{\quad}$

$76 = 70 + \underline{\quad}$

$\underline{\quad} = 50 - 8$

$42 = 50 - \underline{\quad}$

$58 = 50 + \underline{\quad}$

$\underline{\quad} = 20 + 6$

$26 = 30 - \underline{\quad}$

$\underline{\quad} = 60 + 3$

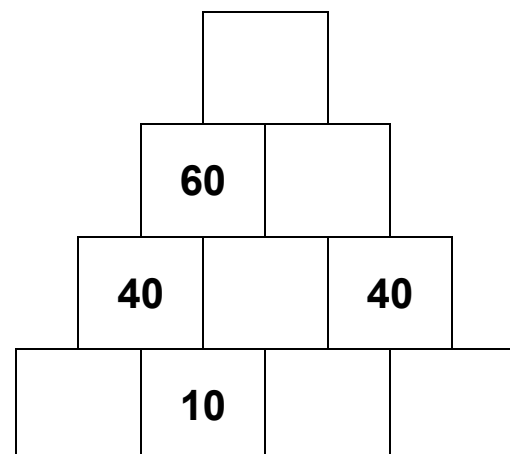
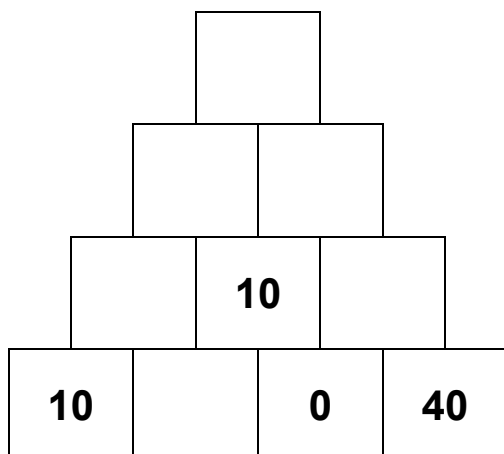
$\underline{\quad} = 70 - 7$

$97 = 90 + \underline{\quad}$

$\underline{\quad} = 80 + 8$

$\underline{\quad} = 100 + 3$

*** Zwei Bausteine zusammengezählt, ergeben den oberen Baustein.



Lernkontrolle 4A

Zahlenraum bis 100; ohne Zehnerübergang



*

$32 + 5 = \underline{\quad}$

$45 - 4 = \underline{\quad}$

$28 + 1 = \underline{\quad}$

$77 + 2 = \underline{\quad}$

$69 - 3 = \underline{\quad}$

$71 - 0 = \underline{\quad}$

$50 + 6 = \underline{\quad}$

$88 - 7 = \underline{\quad}$

$39 - 8 = \underline{\quad}$

$94 + 4 = \underline{\quad}$

$70 - 2 = \underline{\quad}$

$59 + 1 = \underline{\quad}$

$26 + 3 = \underline{\quad}$

$98 - 6 = \underline{\quad}$

$64 + 5 = \underline{\quad}$

$39 - \underline{\quad} = 35$

$45 + \underline{\quad} = 50$

$26 + \underline{\quad} = 28$

$67 - \underline{\quad} = 60$

$94 - \underline{\quad} = 91$

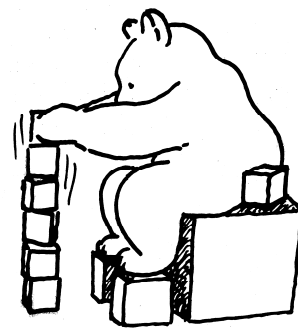
$40 + \underline{\quad} = 44$

$78 - \underline{\quad} = 78$

$83 + \underline{\quad} = 89$

$57 - \underline{\quad} = 52$

$70 - \underline{\quad} = 64$



**

Ergänze. Setze auch das Additions- oder Subtraktionszeichen.

$57 = 51 \underline{\quad} \underline{\quad}$

$88 = 84 \underline{\quad} \underline{\quad}$

$\underline{\quad} = 100 + 9$

$62 = 68 \underline{\quad} \underline{\quad}$

$21 = 29 \underline{\quad} \underline{\quad}$

$\underline{\quad} = 45 - 2$

$74 = 78 \underline{\quad} \underline{\quad}$

$35 = 33 \underline{\quad} \underline{\quad}$

$\underline{\quad} = 34 + 3$

$46 = 46 \underline{\quad} \underline{\quad}$

$\underline{\quad} = 74 + 4$

$\underline{\quad} = 90 - 4$

$93 = 90 \underline{\quad} \underline{\quad}$

$\underline{\quad} = 87 + 3$

$\underline{\quad} = 0 + 89$

Wenn ich zu meiner Zahl 5 dazuzähle, erhalte ich 99.

Zuerst zähle ich zu meiner Zahl 5 dazu. Nun habe ich 3 weniger als 49.

Die Zahl, die ich suche, ist um 9 größer als das Doppelte von 30.

Lernkontrolle 4B



Zahlenraum bis 100; ohne Zehnerübergang

*

$82 + 5 = \underline{\quad}$

$56 - 5 = \underline{\quad}$

$59 + 1 = \underline{\quad}$

$66 + 3 = \underline{\quad}$

$67 - 3 = \underline{\quad}$

$48 - 0 = \underline{\quad}$

$40 + 8 = \underline{\quad}$

$99 - 3 = \underline{\quad}$

$79 - 6 = \underline{\quad}$

$73 + 3 = \underline{\quad}$

$28 - 7 = \underline{\quad}$

$69 + 1 = \underline{\quad}$

$24 + 3 = \underline{\quad}$

$100 - 2 = \underline{\quad}$

$35 + 4 = \underline{\quad}$

$89 - \underline{\quad} = 84$

$75 + \underline{\quad} = 80$

$36 + \underline{\quad} = 39$

$58 - \underline{\quad} = 50$

$26 - \underline{\quad} = 21$

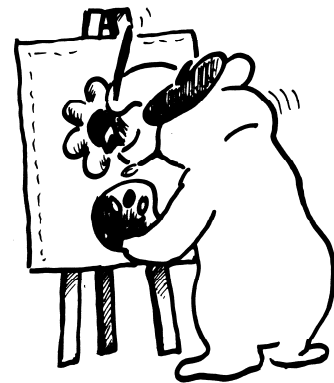
$60 + \underline{\quad} = 68$

$68 - \underline{\quad} = 68$

$34 + \underline{\quad} = 39$

$54 - \underline{\quad} = 51$

$40 - \underline{\quad} = 36$



**

Ergänze. Setze auch das Additions- oder Subtraktionszeichen.

$67 = 61 \underline{\quad} \underline{\quad}$

$26 = 23 \underline{\quad} \underline{\quad}$

$\underline{\quad} = 0 + 85$

$49 = 44 \underline{\quad} \underline{\quad}$

$78 = 79 \underline{\quad} \underline{\quad}$

$\underline{\quad} = 27 - 7$

$92 = 98 \underline{\quad} \underline{\quad}$

$59 = 54 \underline{\quad} \underline{\quad}$

$\underline{\quad} = 54 + 4$

$84 = 84 \underline{\quad} \underline{\quad}$

$\underline{\quad} = 73 + 5$

$\underline{\quad} = 60 - 8$

$36 = 30 \underline{\quad} \underline{\quad}$

$\underline{\quad} = 57 + 3$

$\underline{\quad} = 100 + 7$

Wenn ich zu meiner Zahl 3 dazuzähle, erhalte ich 86.

Zuerst nehme ich von meiner Zahl 6 weg. Nun habe ich 3 mehr als 51.

Die Zahl, die ich suche, ist um 7 kleiner als die Hälfte von 80.