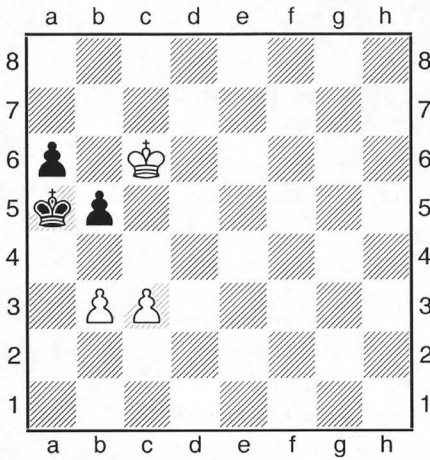
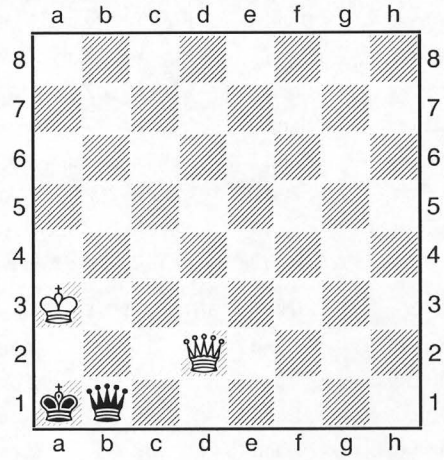


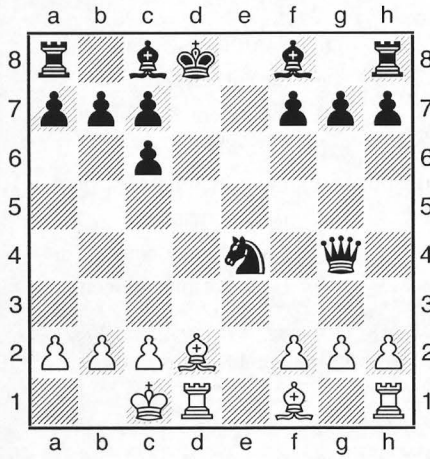
2.41 Weiß setzt Matt in 2 Zügen



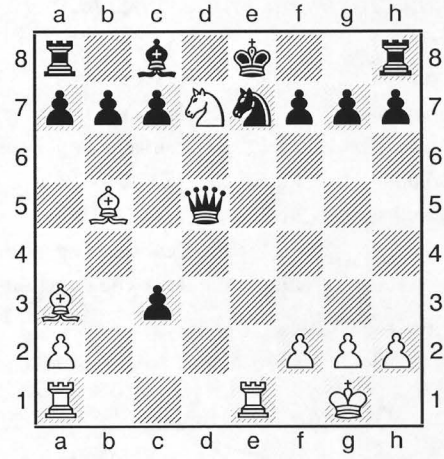
481



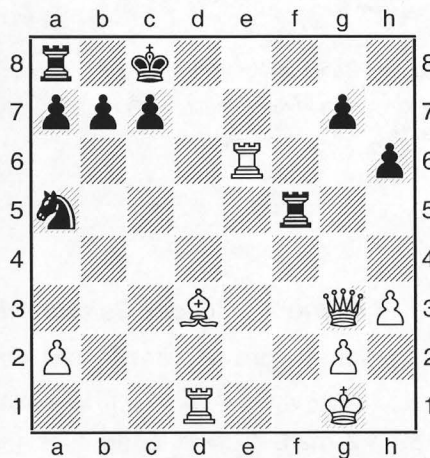
482



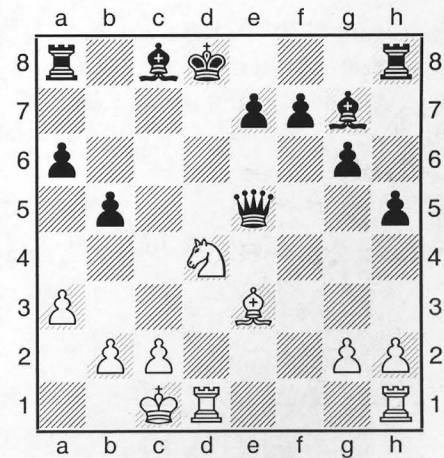
483



484

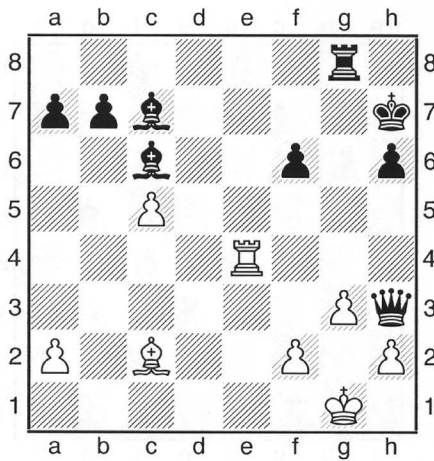


485

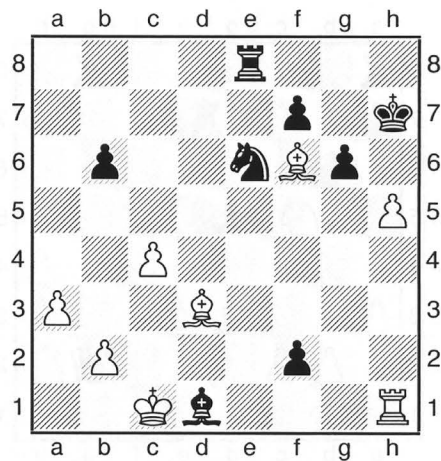


486

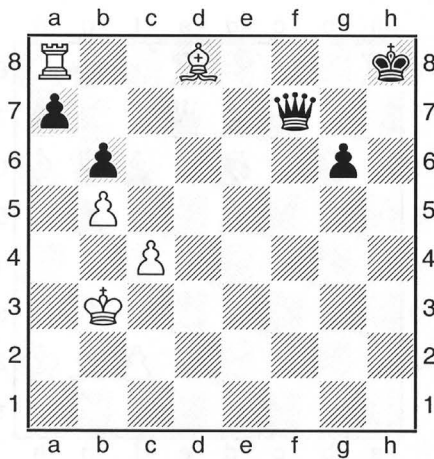
2.41 Weiß setzt Matt in 2 Zügen



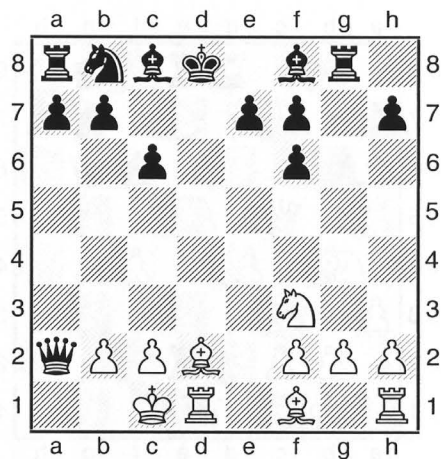
487



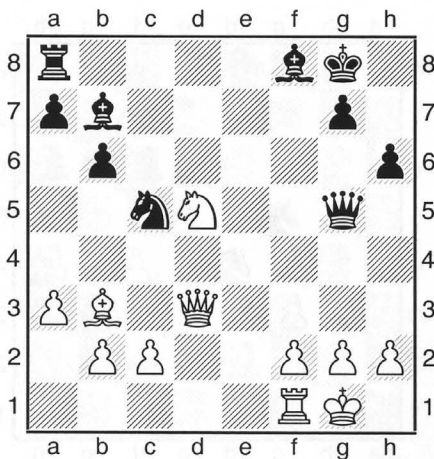
488



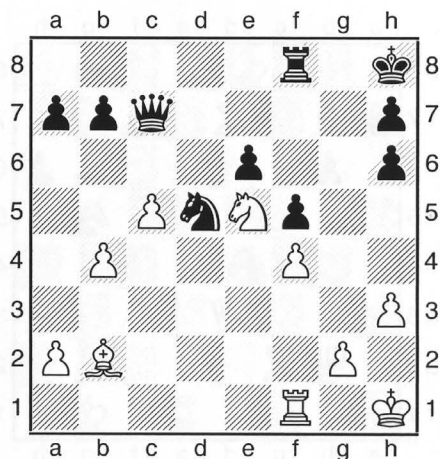
489



490

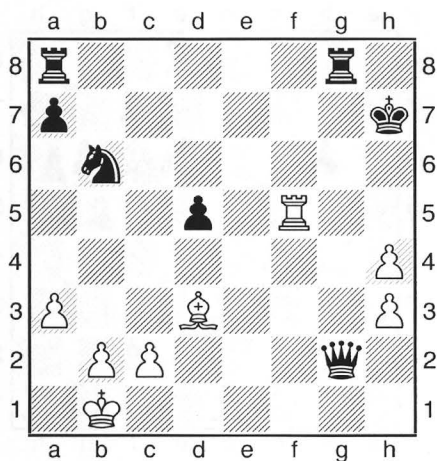


491

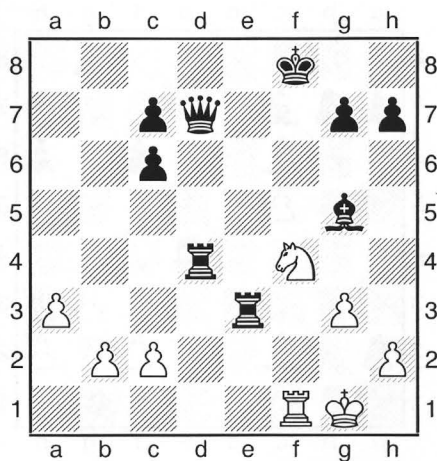


492

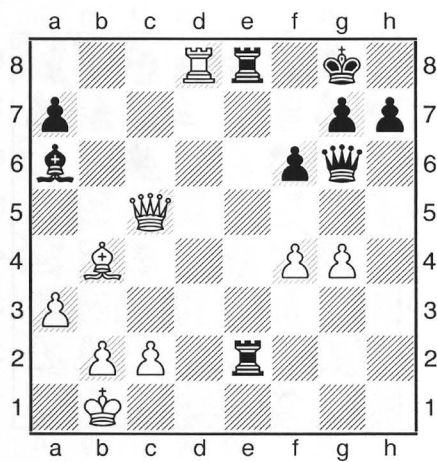
2.42 Weiß setzt Matt in 2 Zügen



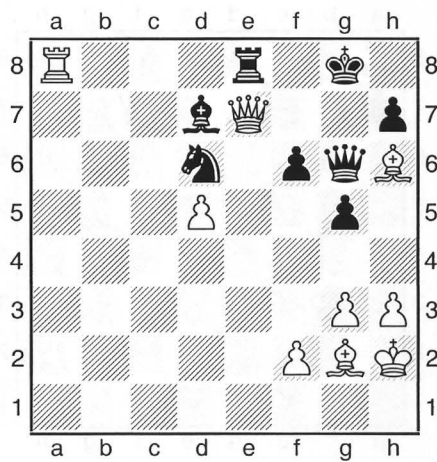
493



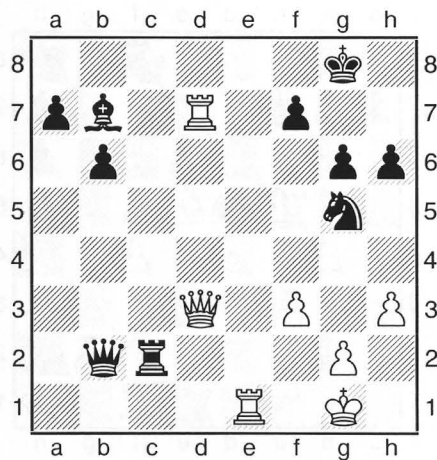
494



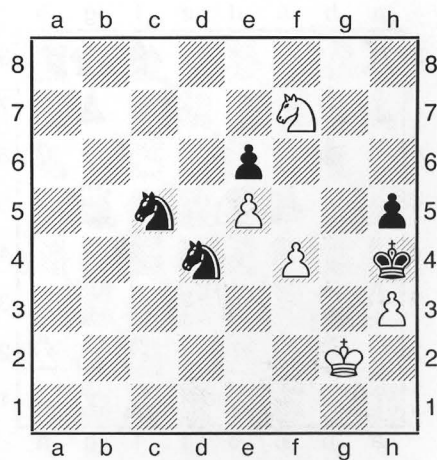
495



496

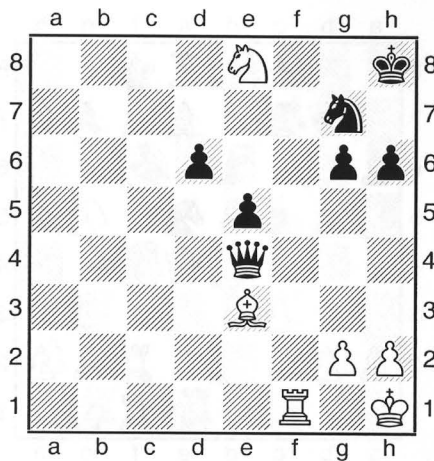


497

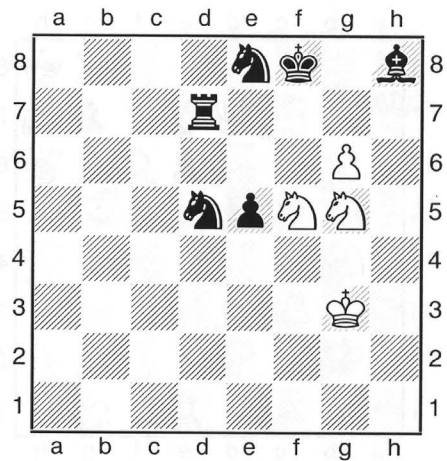


498

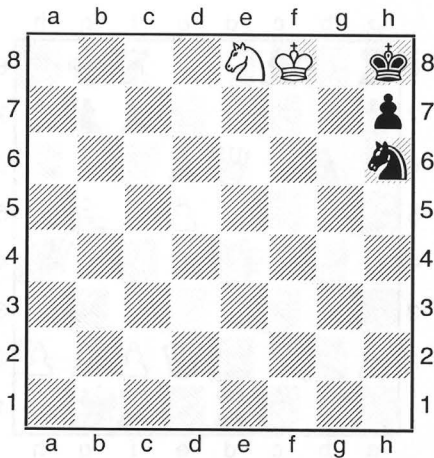
2.42 Weiß setzt Matt in 2 Zügen



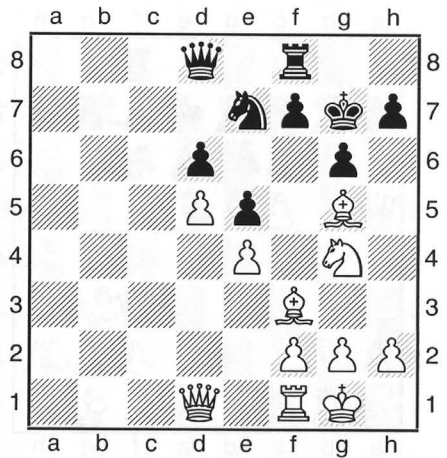
499



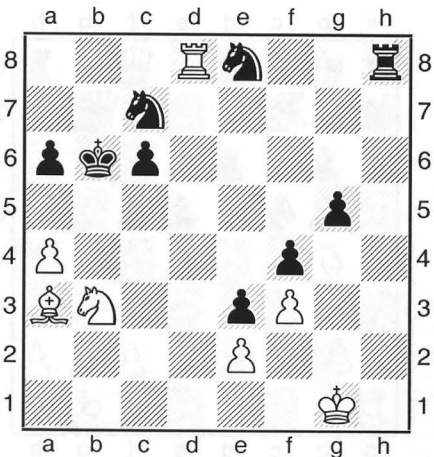
500



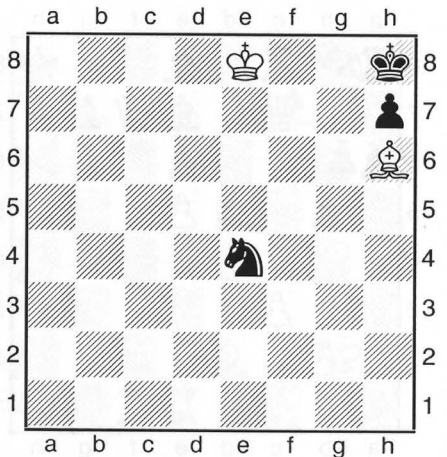
501



502



503



504