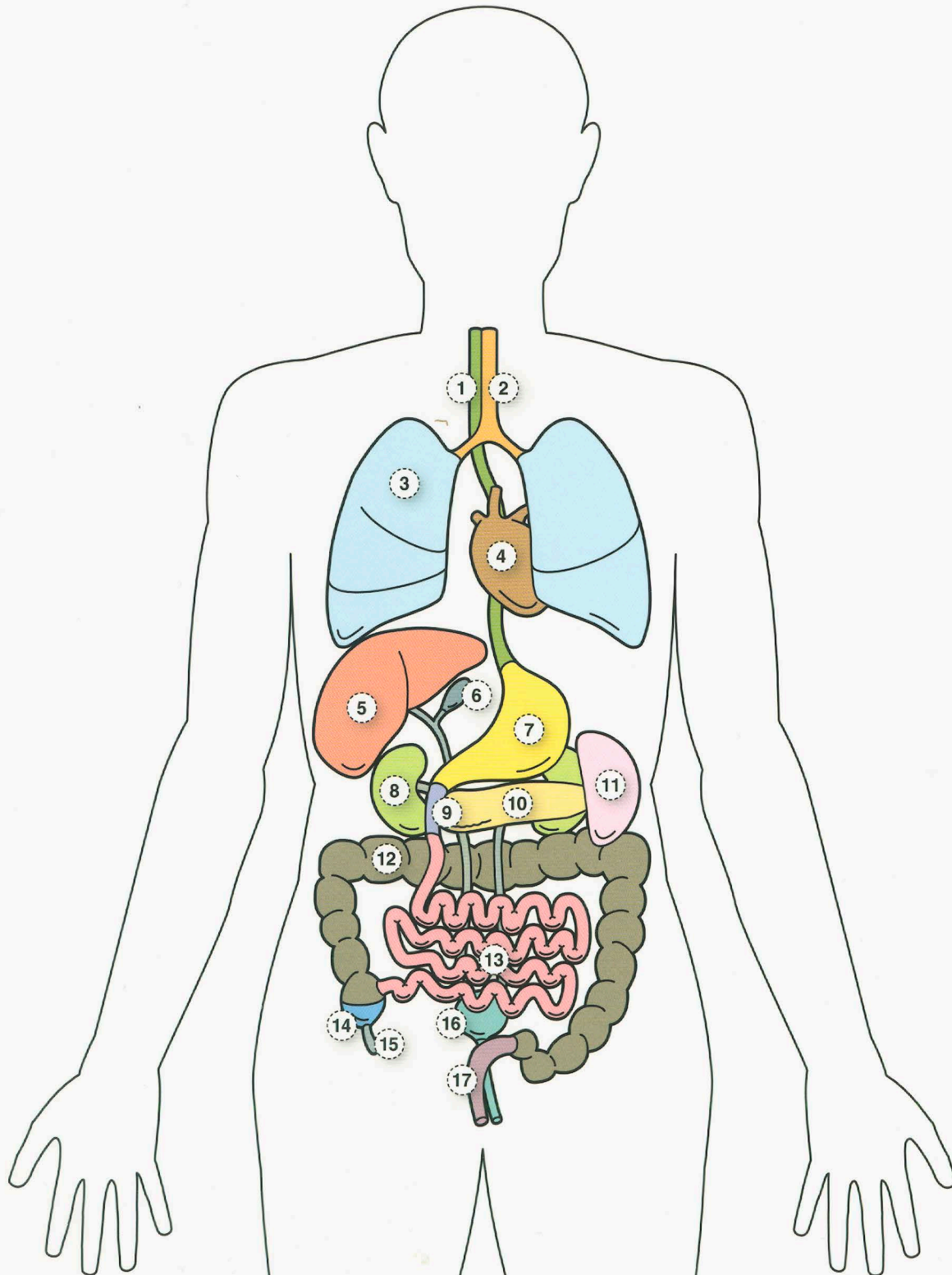


|    |  |
|----|--|
| 1  |  |
| 2  |  |
| 3  |  |
| 4  |  |
| 5  |  |
| 6  |  |
| 7  |  |
| 8  |  |
| 9  |  |
| 10 |  |
| 11 |  |
| 12 |  |
| 13 |  |
| 14 |  |
| 15 |  |
| 16 |  |
| 17 |  |



- 1 Speiseröhre
- 2 Luftröhre
- 3 Lunge
- 4 Herz
- 5 Leber
- 6 Gallenblase
- 7 Magen
- 8 Zwei Nieren
- 9 Zwölffingerdarm
- 10 Bauchspeicheldrüse
- 11 Milz
- 12 Dickdarm
- 13 Dünndarm
- 14 Blinddarm
- 15 Wurmfortsatz
- 16 Harnblase/Harnröhre
- 17 Mastdarm